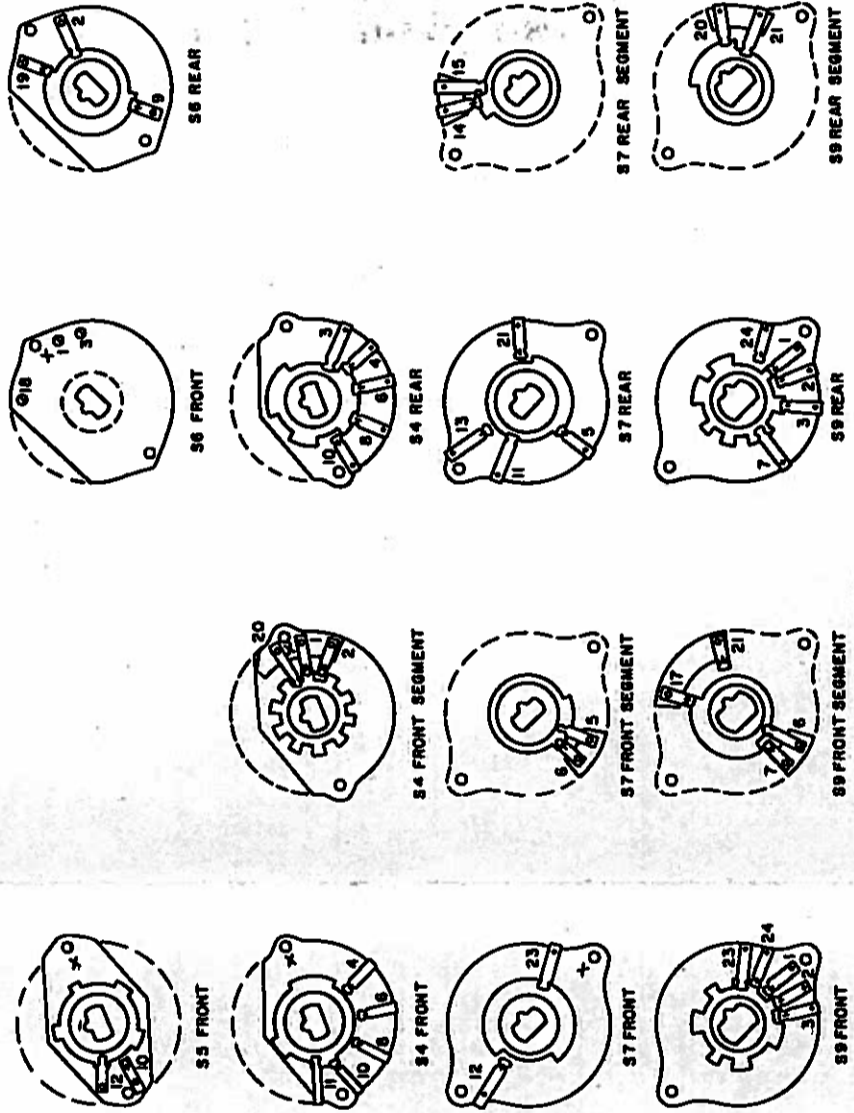


- NOTES:**
1. PRIOR TO ATTEMPTING TO OIL THE GEAR, BE SURE THE FOLLOWING NOTES 1 THRU 12 HAVE BEEN FOLLOWED:
  2. VISUALLY CHECK THE POSITION OF THE COLLAR AS SHOWN IN DETAIL "A". THIS CORRESPONDS TO THE POSITION OF THE COLLAR AS SHOWN IN DETAIL "B".
  3. VISUALLY CHECK THE POSITION OF THE COLLAR AS SHOWN IN DETAIL "A". THIS CORRESPONDS TO THE POSITION OF THE COLLAR AS SHOWN IN DETAIL "B".
  4. VISUALLY CHECK THE POSITION OF THE COLLAR AS SHOWN IN DETAIL "A". THIS CORRESPONDS TO THE POSITION OF THE COLLAR AS SHOWN IN DETAIL "B".
  5. VISUALLY CHECK THE POSITION OF THE COLLAR AS SHOWN IN DETAIL "A". THIS CORRESPONDS TO THE POSITION OF THE COLLAR AS SHOWN IN DETAIL "B".
  6. VISUALLY CHECK THE POSITION OF THE COLLAR AS SHOWN IN DETAIL "A". THIS CORRESPONDS TO THE POSITION OF THE COLLAR AS SHOWN IN DETAIL "B".
  7. VISUALLY CHECK THE POSITION OF THE COLLAR AS SHOWN IN DETAIL "A". THIS CORRESPONDS TO THE POSITION OF THE COLLAR AS SHOWN IN DETAIL "B".
  8. VISUALLY CHECK THE POSITION OF THE COLLAR AS SHOWN IN DETAIL "A". THIS CORRESPONDS TO THE POSITION OF THE COLLAR AS SHOWN IN DETAIL "B".
  9. VISUALLY CHECK THE POSITION OF THE COLLAR AS SHOWN IN DETAIL "A". THIS CORRESPONDS TO THE POSITION OF THE COLLAR AS SHOWN IN DETAIL "B".
  10. VISUALLY CHECK THE POSITION OF THE COLLAR AS SHOWN IN DETAIL "A". THIS CORRESPONDS TO THE POSITION OF THE COLLAR AS SHOWN IN DETAIL "B".
  11. VISUALLY CHECK THE POSITION OF THE COLLAR AS SHOWN IN DETAIL "A". THIS CORRESPONDS TO THE POSITION OF THE COLLAR AS SHOWN IN DETAIL "B".
  12. VISUALLY CHECK THE POSITION OF THE COLLAR AS SHOWN IN DETAIL "A". THIS CORRESPONDS TO THE POSITION OF THE COLLAR AS SHOWN IN DETAIL "B".
  13. VISUALLY CHECK THE POSITION OF THE COLLAR AS SHOWN IN DETAIL "A". THIS CORRESPONDS TO THE POSITION OF THE COLLAR AS SHOWN IN DETAIL "B".
  14. VISUALLY CHECK THE POSITION OF THE COLLAR AS SHOWN IN DETAIL "A". THIS CORRESPONDS TO THE POSITION OF THE COLLAR AS SHOWN IN DETAIL "B".
  15. VISUALLY CHECK THE POSITION OF THE COLLAR AS SHOWN IN DETAIL "A". THIS CORRESPONDS TO THE POSITION OF THE COLLAR AS SHOWN IN DETAIL "B".
  16. VISUALLY CHECK THE POSITION OF THE COLLAR AS SHOWN IN DETAIL "A". THIS CORRESPONDS TO THE POSITION OF THE COLLAR AS SHOWN IN DETAIL "B".
  17. VISUALLY CHECK THE POSITION OF THE COLLAR AS SHOWN IN DETAIL "A". THIS CORRESPONDS TO THE POSITION OF THE COLLAR AS SHOWN IN DETAIL "B".
  18. VISUALLY CHECK THE POSITION OF THE COLLAR AS SHOWN IN DETAIL "A". THIS CORRESPONDS TO THE POSITION OF THE COLLAR AS SHOWN IN DETAIL "B".
  19. VISUALLY CHECK THE POSITION OF THE COLLAR AS SHOWN IN DETAIL "A". THIS CORRESPONDS TO THE POSITION OF THE COLLAR AS SHOWN IN DETAIL "B".
  20. VISUALLY CHECK THE POSITION OF THE COLLAR AS SHOWN IN DETAIL "A". THIS CORRESPONDS TO THE POSITION OF THE COLLAR AS SHOWN IN DETAIL "B".



ALL SWITCHES VIEWED FROM REAR OF MODULE (DETAIL A)

S8 FRONT  
S8 REAR  
S8 VIEWED FROM FRONT OF MODULE (DETAIL B)

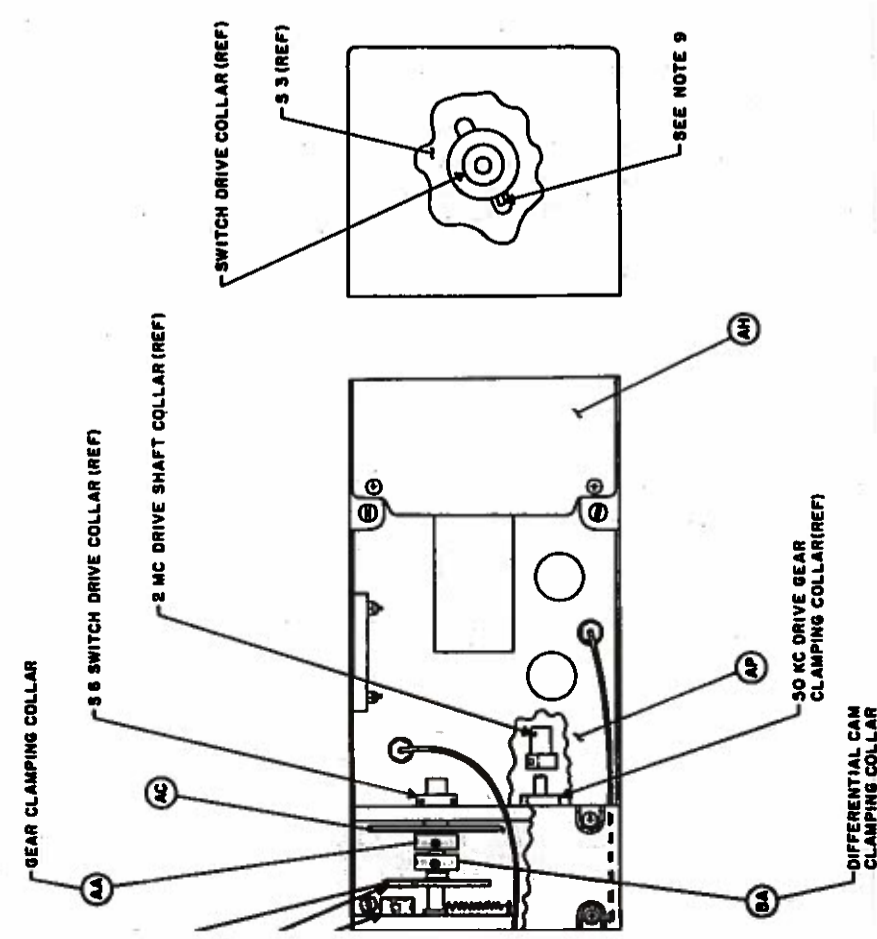


Figure 7-40. Mechanical Alignment Procedure for 51X-2B Units Through MCN 7867